



Handheld Gas Vibrator

EZ-Vibe



CONTENTS

Scope of This Manual	3
Safety Considerations.	3
Terminology and Symbols	3
Safety	3
Benefits of Vibration.	4
Operation	4
Starting Procedure.	4
Vibrator Insertion	4
Maintenance	5
Vibrator Head	5
Engine	6
Service	6
Parts.	7
Wyco Head.	7
Wyco EZ-Vibe Vibrator	8
Robin Engine Drawings	9
Camshaft.	9
Air Cleaner and Choke	10
Clutch.	12
Starter Assembly	13
Cylinder Block.	14
Muffler	16
Crank Shaft and Piston	17
Carburetor	18
Ignition	20
Cover	21
Fuel Tank	22
Clutch Housing Assembly	23

SCOPE OF THIS MANUAL

This manual describes the use, maintenance and parts of the EZ-Vibe Handheld Gas Vibrator. The electronic version of this manual is available on our website at www.badgermeter.com.

IMPORTANT

Read this manual carefully before attempting any operation or maintenance. Keep the manual in an accessible location for future reference.




Unpacking and Inspection

Upon opening the shipping container, visually inspect the product and applicable accessories for any physical damage such as scratches, loose or broken parts, or any other sign of damage that may have occurred during shipment.

NOTE: If damage is found, request an inspection by the carrier's agent within 48 hours of delivery and file a claim with the carrier. A claim for equipment damage in transit is the sole responsibility of the purchaser.

SAFETY CONSIDERATIONS

Terminology and Symbols

-  **DANGER** Indicates a hazardous situation, which, if not avoided, is estimated to be capable of causing death or serious personal injury.
-  **WARNING** Indicates a hazardous situation, which, if not avoided, could result in severe personal injury or death.
-  **CAUTION** Indicates a hazardous situation, which, if not avoided, is estimated to be capable of causing minor or moderate personal injury or damage to property.

Safety

Read and follow the safety instructions given below. In addition, read and follow all safety precautions given in the engine instruction manual.

DANGER

NEVER FILL THE ENGINE WITH GAS WHILE EZ-VIBE IS BEING CARRIED. IF FUEL IS SPILT, WIPE IT AWAY CAREFULLY AND WAIT UNTIL THE FUEL HAS DRIED BEFORE STARTING ENGINE.

FLAMMABLE, NO SMOKING.

WARNING

ALWAYS WEAR HEARING AND EYE PROTECTION.

KEEP HANDS AWAY FROM HOT METAL PARTS OF THE ENGINE.

BENEFITS OF VIBRATION

Vibrating freshly poured concrete

- Increases concrete strength by removing air voids.
- Improves appearance by removing air voids.
- Increases bond between concrete and reinforcing bars.
- Fluidizes concrete allowing a stiffer mix with a lower water-to-cement ratio to be placed which increases concrete strength.
- Reduces cold joints and honeycombing.

OPERATION

Read and follow the instructions given in the engine instruction manual.

This is a 4-Cycle engine. Do not mix gas and oil. Be sure to fill the crank case with the oil specified in the engine instruction manual.

Starting Procedure

1. Always check for gas tank and fuel hose leaks before using engine.
2. Make sure fresh fuel is in tank.
3. Make sure crank case is properly filled with oil.
4. Make sure switch is ON.
5. Push primer 7...10 times.
6. If the engine is cold, place the choke in the closed position.
7. Pull the starter rope quickly, but do not pull to the point where additional rope does not come out.
8. If the engine pops without starting, set choke to half open and pull again.

Vibrator Insertion

1. Insert the vibrator vertically, allowing it to penetrate rapidly to the bottom of the lift at least 6 inches into any previous lift.
2. Hold the vibrator at the bottom of the lift for 5...15 seconds.
3. Pull the vibrator up at a rate of about 5 seconds per foot.
4. Make sure that the radius of actions overlap (distance between the vibrators should be 1.5 times the radius of action).

MAINTENANCE

Vibrator Head

Perform maintenance on the head after every 50 hours of use. Replace hex driver, seals and bearings. See [Wyco Head on page 7](#).

1. Hold the nose end in a vise.
2. Unscrew the end cap (counter-clockwise) with a chain wrench or a good pipe wrench.



Figure 1: Unscrew end cap

3. Pull the eccentric rotor assembly out of the housing.
If the bearings are stuck and you have difficulty removing them from the housing, screw end cap partly back into the housing and bounce the head and cap down on a block of wood to loosen the bearings from their seat, then pull out the rotor assembly.

NOTE: Hexagon Driver has left hand threads.



Figure 2: Rotor Assembly

4. Flush the rotor assembly and housing with solvent and wipe all parts clean.
5. Replace bearings, seals and hex driver.
6. Maintain concentric alignment of hex driver with respect to rotor shaft.
7. Refill with Wyco part #W655-140 non-foaming vibrator oil.
8. Apply Loctite 545 or equivalent to threads on both ends of the rotor.

NOTE: Wyco 1-3/8 in. head gets 1 ounce of head oil.

9. Replace the rotor assembly into the head housing.
10. Apply Loctite 545 or equivalent all around the threads of the end cap.
11. Tighten the end cap.
12. Wipe off excess Loctite 545.

Engine

Follow the recommendations in the engine manufacturer's instruction manual regarding, but not limited to, the spark plug, oil change and air filter service.

SERVICE

Order repair or replacement parts from Wyco. Return the product to Wyco for warranty repairs or chargeable repairs. Always obtain an RGA (Return Goods Authorization) number and include it in the address before returning any parts for warranty consideration or chargeable repair.

Phone # (262) 639-6770 or Toll Free # (800) 233-9926

RGA#

Wyco

8635 Washington Ave

Racine, Wisconsin 53406

You can order engine parts from Wyco or find them locally at an authorized engine dealer. To locate an engine dealer in your area, go to www.engines.honda.com or www.robinamerica.com

PARTS

The following pages contain parts drawings for the EZ-Vibe vibrator and the Robin's 4 Cycle Model EH035 Engine. Wyco part numbers are available directly from Wyco.

Wyco Head

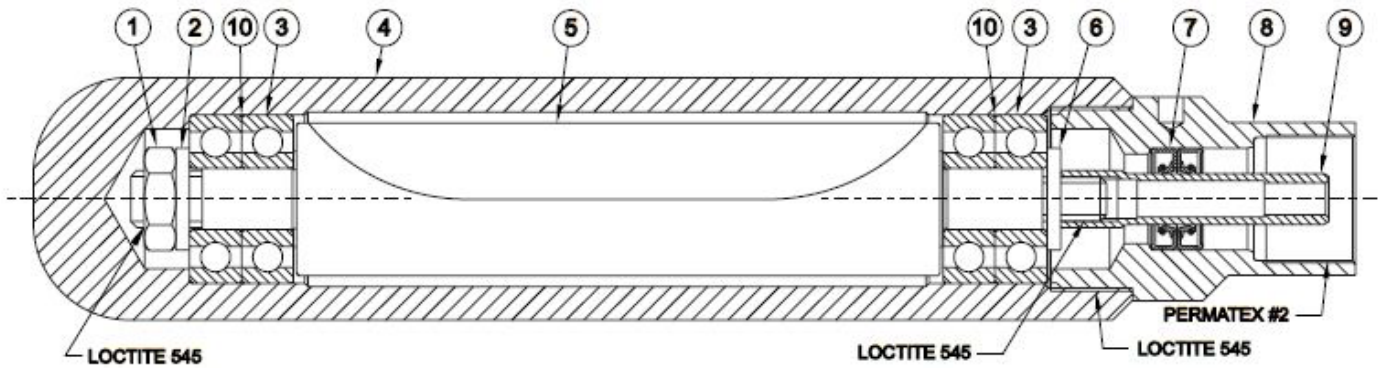
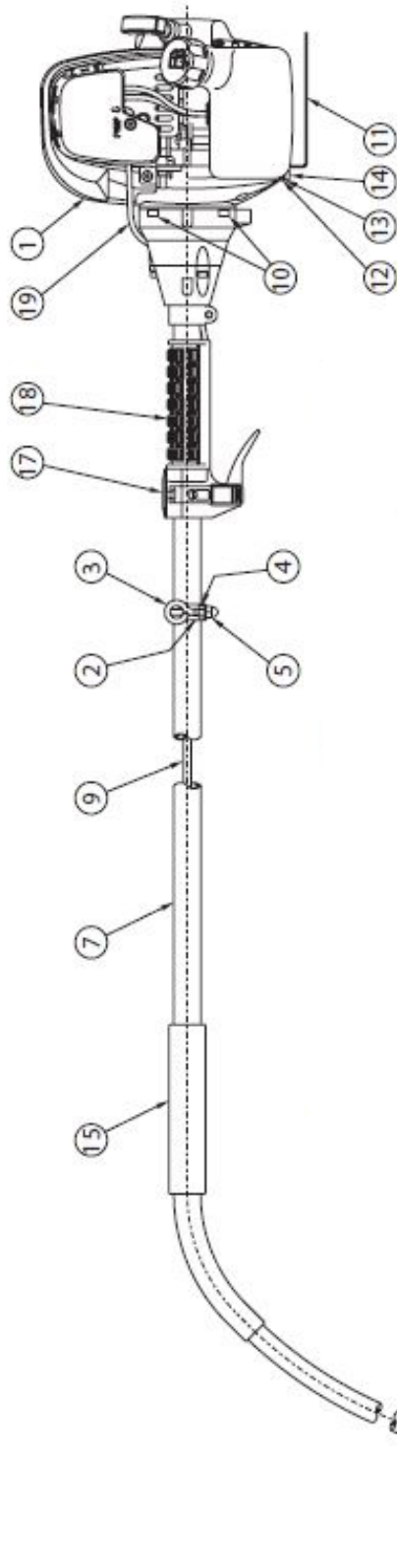


Figure 3: Wyco head

Item	Description	Qty	1.38B
1	Nut, hex jam	1	432708
2	Washer, flat	1	887015
3	Bearing, ball	4	096013
4	Housing, square	1	588331
5	Rotor	1	718357
6	Washer, flat	1	887015
7	Seal, oil*	2	—
8	End cap*	1	—
9	Driver, hex	1	34446
10	Shim	2	419701

*Manufacturer suggests using end caps with pressed in seals, Wyco part #208231

Wyco EZ-Vibe Vibrator



Item	Wyco No.	Description	Qty
1	403103	Kit, engine, Robin 4-Cycle 35cc	1
2	403106	Loop strap, steel, with rubber	1
3	431226	Bolt, eye, 1/4-20 × 1	1
4	432010	Nut, hex, 1/4-20, zinc plated	1
5	432011	Nut, hex, 1/4-20, acorn, zinc	1
6*	819012	S trap, carry, electric motor	1
7	403001	Assembly, Robin, tubing and casing	1
8	878-533	Assembly, vibrator head, 1-3/8 in., full sq	1
9	403105	Assembly, core, 5/16 in.	1
10	402169	Screw, soc head cap, M6 × 20	4
11	403107	Plate, skid	1
12	884054	Washer, flat, 5.3 mm × 10 mm	2
13	434109	Washer, spring lock, M5	2
14	434124	Screw, soc head cap, M5 × 10	2
15	403108	Grip, foam	6.5 in.
16*	403110	Oil, engine, 1 quart, SAE 30	1
17	403112	Throttle, lever	1
18	403113	Grip, throttle	1
19	403114	Throttle cable	1

*Part is not shown

Figure 4: EZ-Vibe vibrator

ROBIN ENGINE DRAWINGS

Camshaft

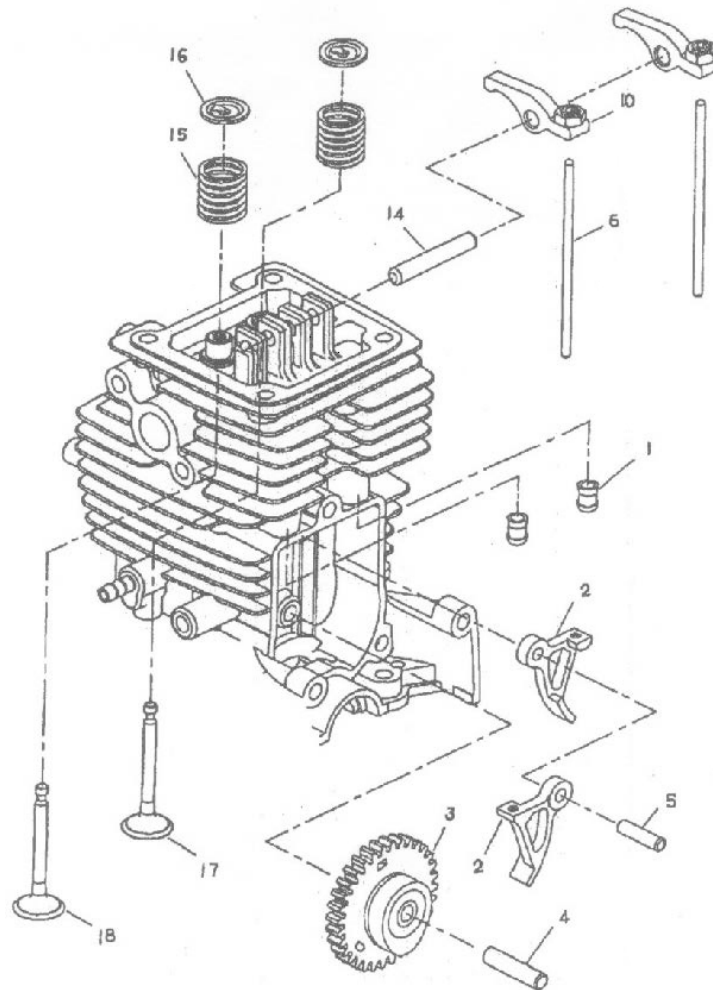


Figure 5: Camshaft

Item	Robin No.	Description	Qty
1	5921501400	Spacer	2
2	5923500001-1	Cam lifter	2
3	5933003000	Cam gear assembly	1
4	5923500501	Cam gear shaft	1
5	5923500600	Cam lifter shaft	1
6	5933500000	Push rod	2
10	5933002000	Rocker arm assembly	2
14	5933500100	Rocker shaft	1
15	5933500200	Valve spring	2
16	5933500300	Spring retainer	2
17	5933500400	Exhaust valve	1
18	5933500500	Intake valve	1

Air Cleaner and Choke

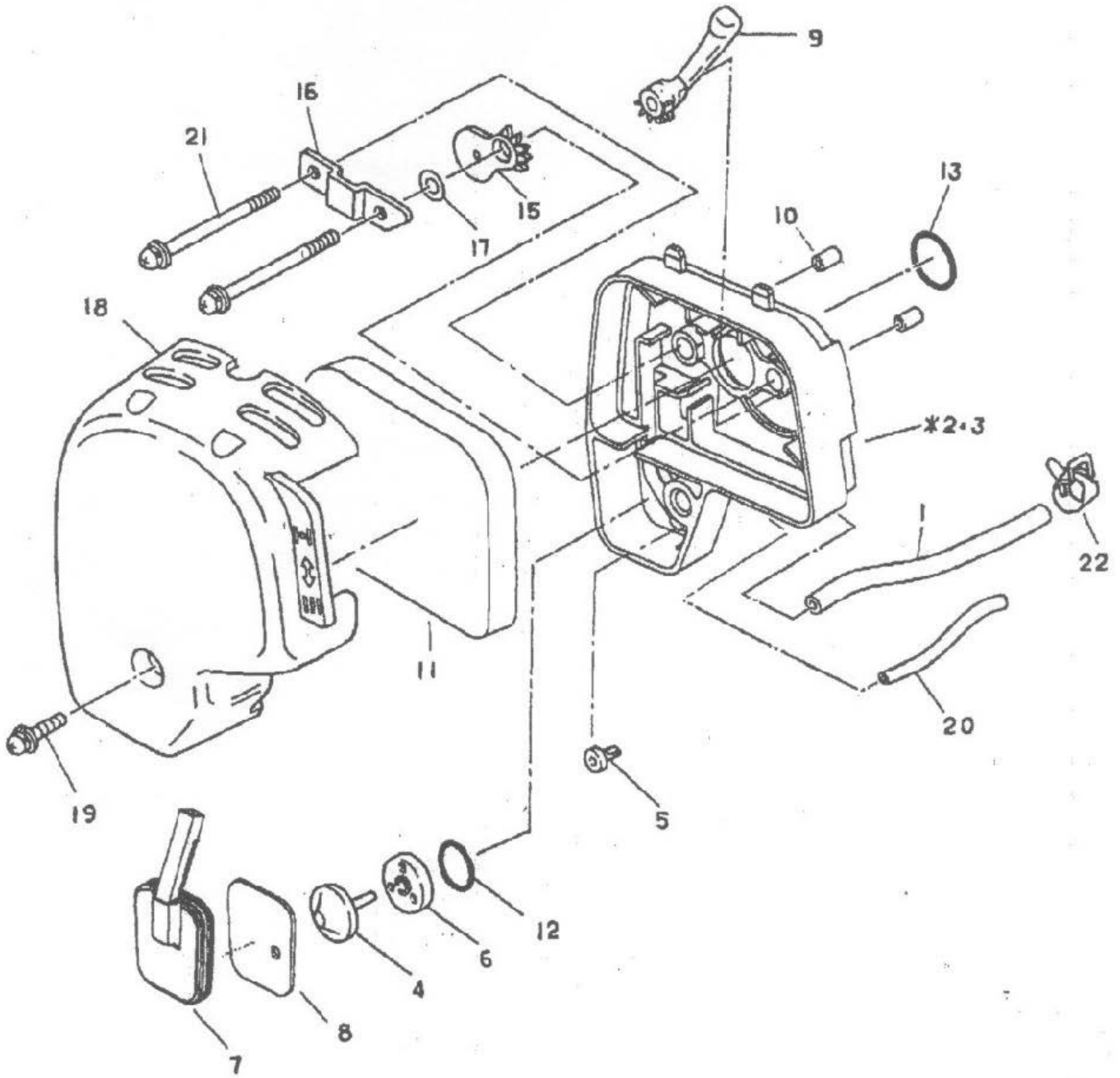


Figure 6: Air cleaner and choke

Item	Robin No.	Wyco No.	Description	Qty
1	5931500900	—	Breather pipe	1
2	5933001000	403213	Cleaner assembly plate	1
3	5933500700	—	Air cleaner plate	1
4	5316500701	—	Choke valve	1
5	5923502400	—	Choke valve (1)	1
6	5923502500	—	Choke valve plate	1
7	5933501600	—	Separator plate complete	1
8	5923503500	—	Separator gasket	1
9	5923502200-1	403214	Choke lever	1
10	0230059880	—	Spacer	2
11	5933501200-1	403215	Air cleaner element	1
12	0240139970	—	O-Ring	1
13	0240159990	—	O-Ring	1
15	5923502301	403216	Choke plate	1
16	5923502600	—	Plate	1
17	0213069990	—	Gasket	1
18	5933500800	403217	Air cleaner cover	1
19	0140059480	—	Screw	1
20	5923503001	—	Pipe	1
21	5923503100	—	Screw	2
22	0561080010	—	Hose clamp	1

Clutch

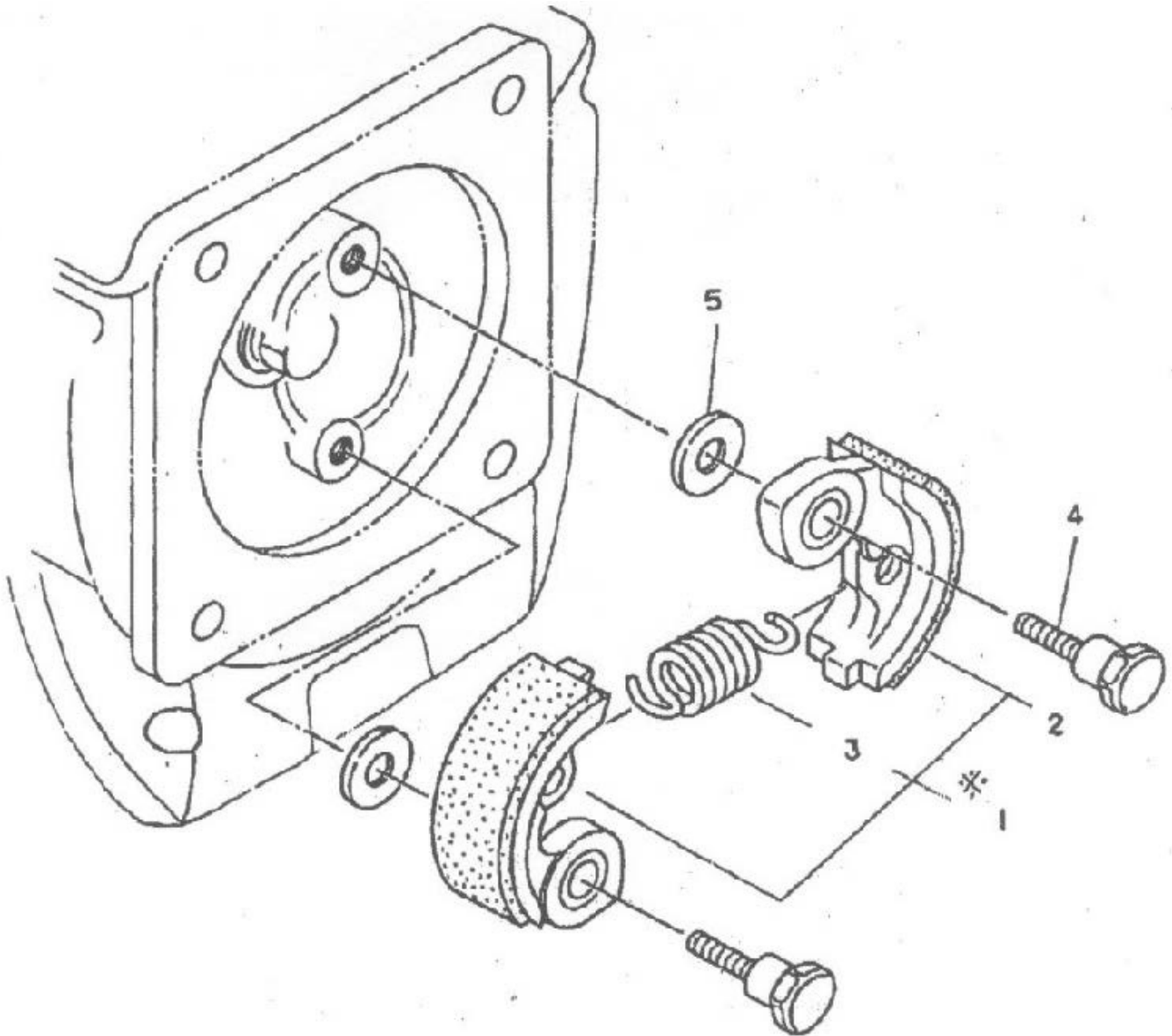


Figure 7: Clutch

Item	Robin No.	Wyco No.	Description	Qty
1	5318003000	—	Clutch assembly	1
2	5318003010	403207	Clutch shoe	2
3	5318003020	403208	Clutch spring	1
4	5938500000	—	Clutch bolt	2
5	0200089800	—	Washer	2

Starter Assembly

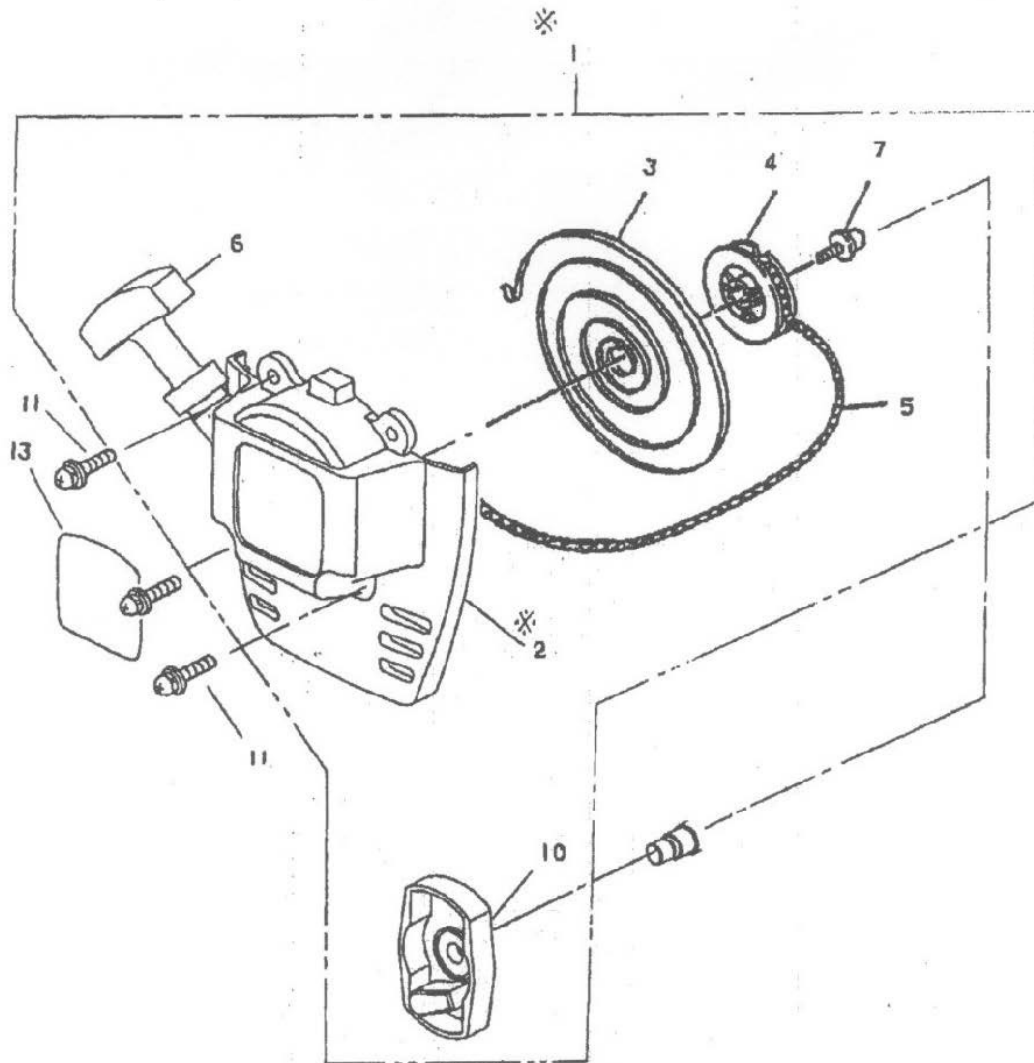


Figure 8: Starter assembly

Item	Robin No.	Wyco No.	Description	Qty
1	5935002000	—	Cover starter assembly	1
2	5935500600	—	Starter rewind	1
3	5025001020	403203	Spiral spring	1
4	5315022020	403204	Reel	1
5	5315022040	403205	Starter rope	1
6	5215002110	—	Starter knob	1
7	5425003010	—	Set screw	1
10	5315023000	—	Pulley	1
11	0140059480	—	Screw assembly	4
13	5939500400	—	Model label	1

Cylinder Block

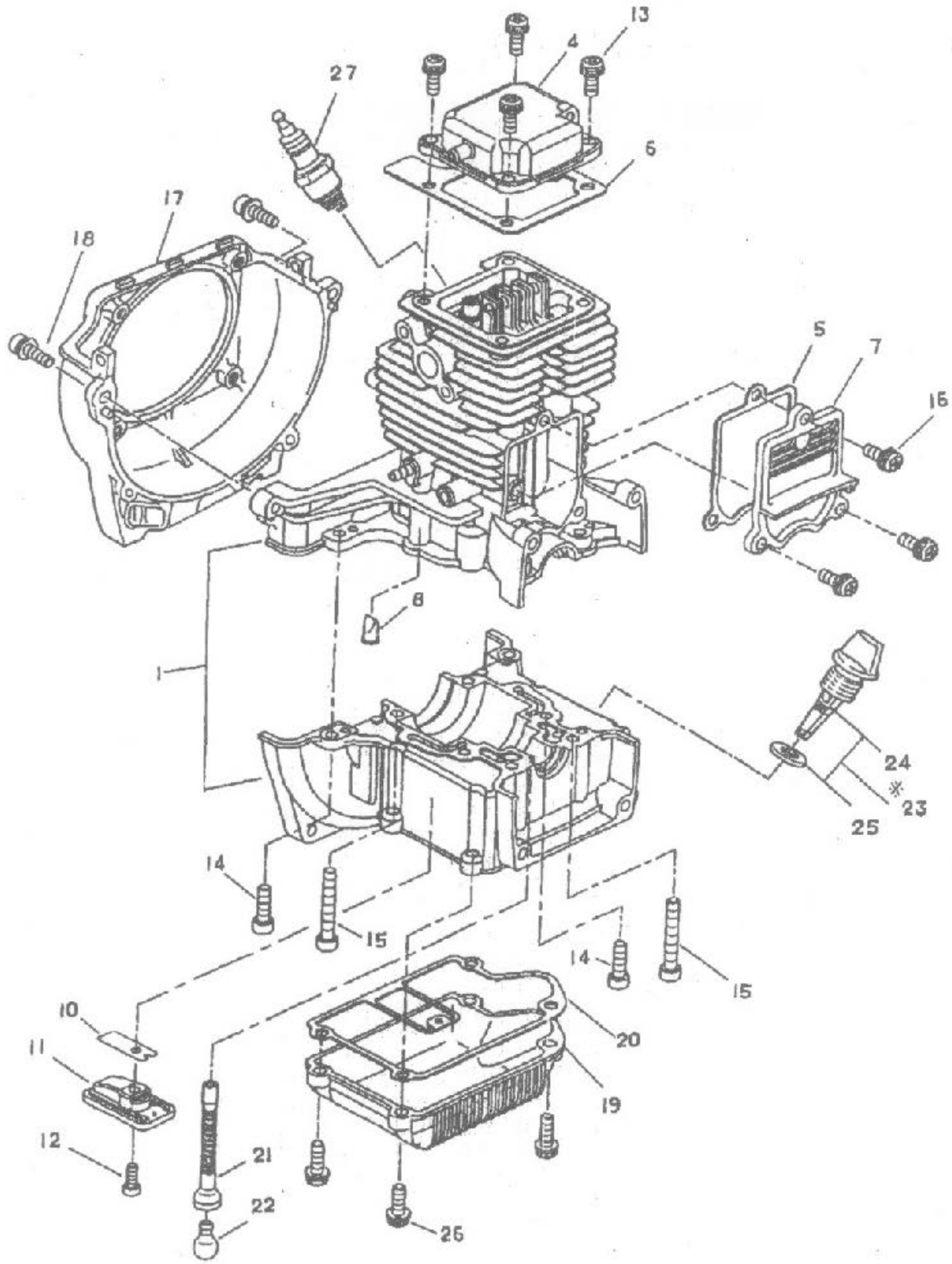


Figure 9: Cylinder Block

Item	Robin No.	Wyco No.	Description	Qty
1	5931005000-1	—	Cylinder block set	1
4	5931004000	—	Rocker cover complete	1
5	5921500700	—	Gasket, cover cam gear	1
6	5931500800	—	Gasket, rocker cover	1
7	5921500502	—	Cover, cam gear	1
8	5921501800	—	Check valve	2
10	5921501000	—	Lead valve	1
11	5921501100	—	Retainer plate	1
12	0119049960	—	Socket head bolt	1
13	0043605160	—	Screw assembly	4
14	0119059470	—	Socket head bolt	4
15	0119059860	—	Socket head bolt	4
16	0043605140	—	Screw assembly	3
17	5935500200-1	—	Blower housing	1
18	0119059531	—	Socket head bolt	4
19	5936500000	—	Case, oil	1
20	5936500100	—	Gasket, case	1
21	5926500200-1	—	Tube, oil	1
22	5926500300	—	Weight, oil	1
23	5926015000	—	Oil gauge assembly	1
24	5926500600	—	Oil gauge	1
25	0213169990	—	Gasket	1
26	0043605180	—	Screw assembly	4
27	0650109950	403201	Spark plug	1

Muffler

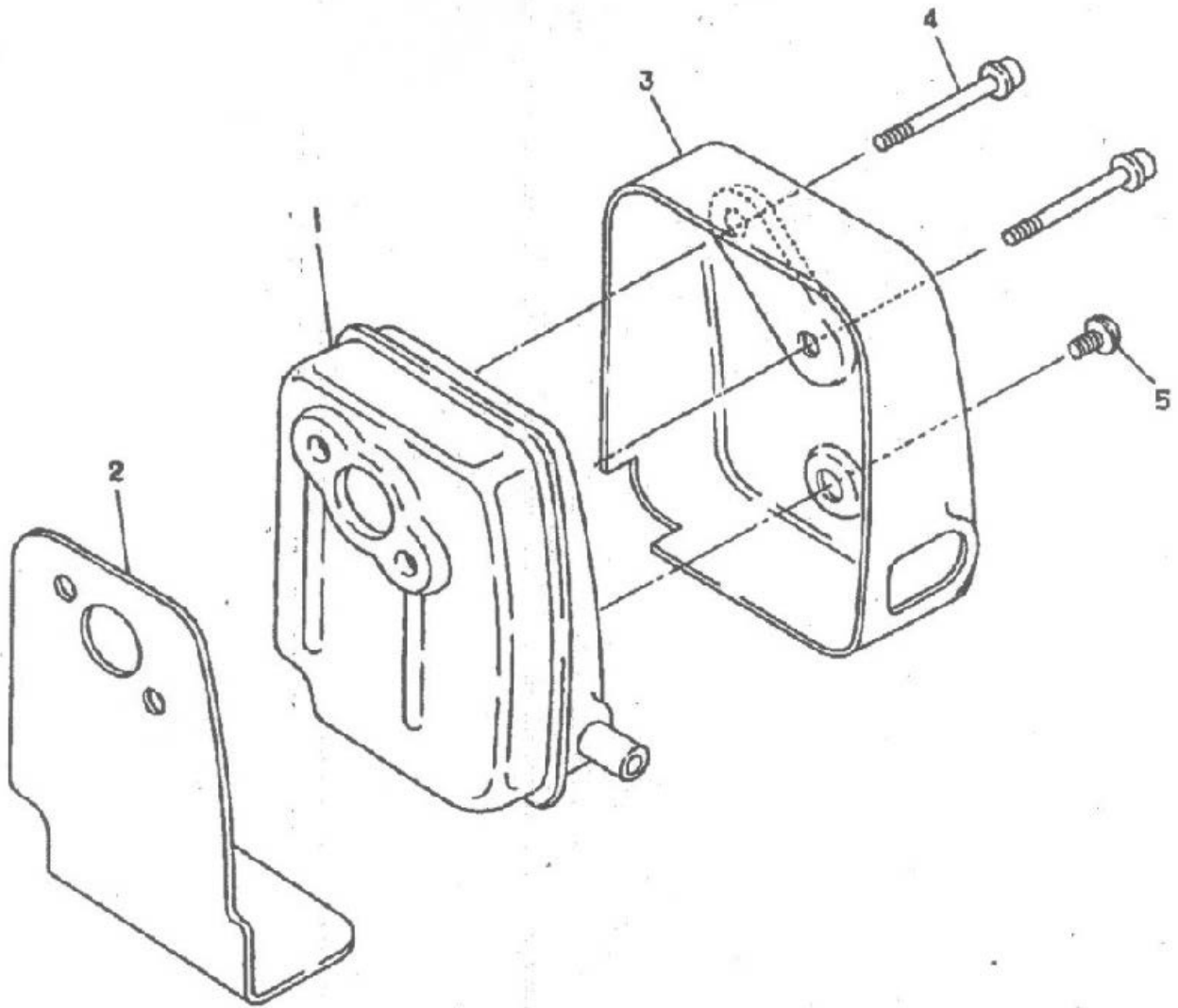


Figure 10: Muffler

Item	Robin No.	Description	Qty
1	5923001000	Exhaust muffler	1
2	5923501601	Muffler gasket	1
3	5923503400	Muffler cover	1
4	0119059520	Socket head bolt	2
5	0140059962	Screw	1

Crank Shaft and Piston

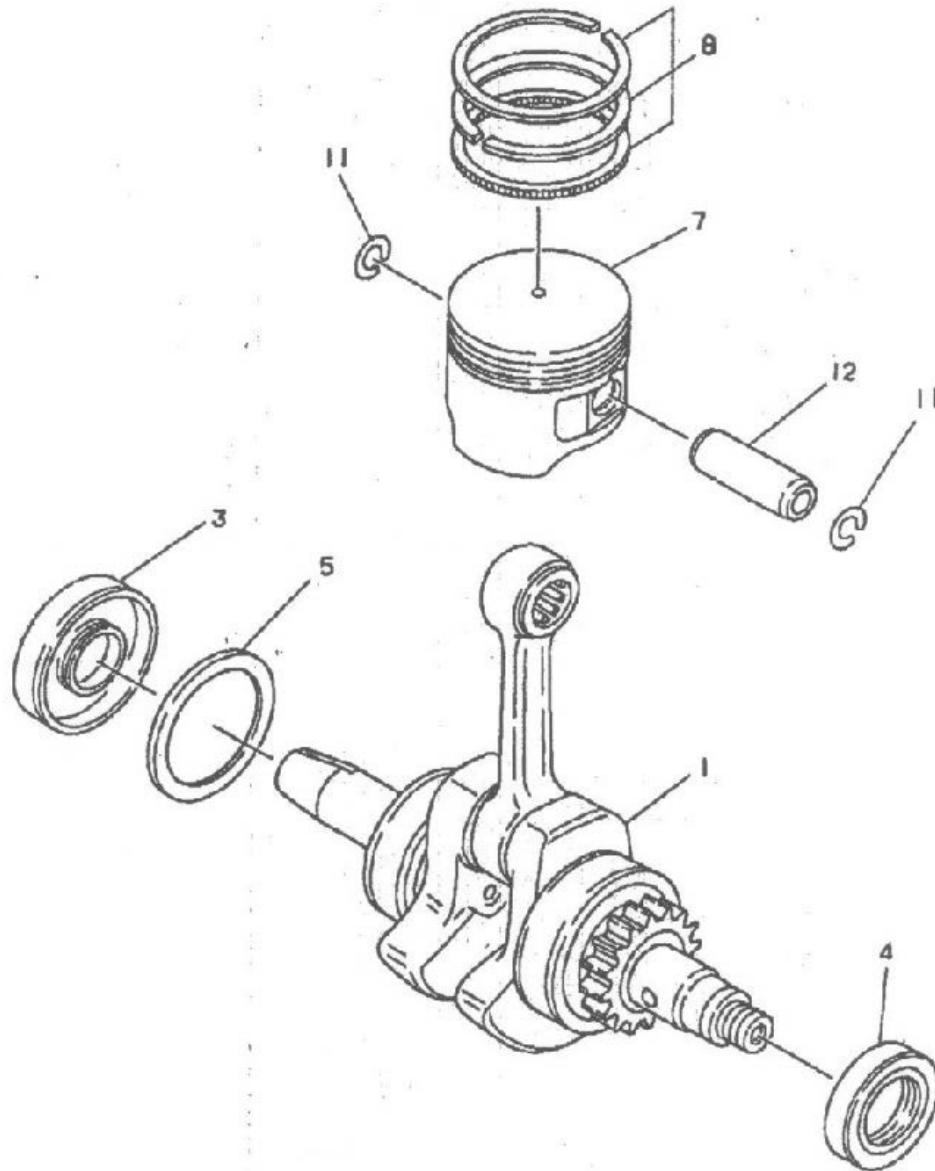


Figure 11: Crank shaft and piston

Item	Robin No.	Description	Qty
1	5932003000	Crank shaft complete	1
3	0440129950	Oil seal - L	1
4	0440109970	Oil seal - S	1
5	5932501000	Clip	1
7	5932500400	Piston	1
8	5932004000	Piston ring set	1
11	0565099990	Clip	2
12	5932500900	Pin, piston	1

Carburetor

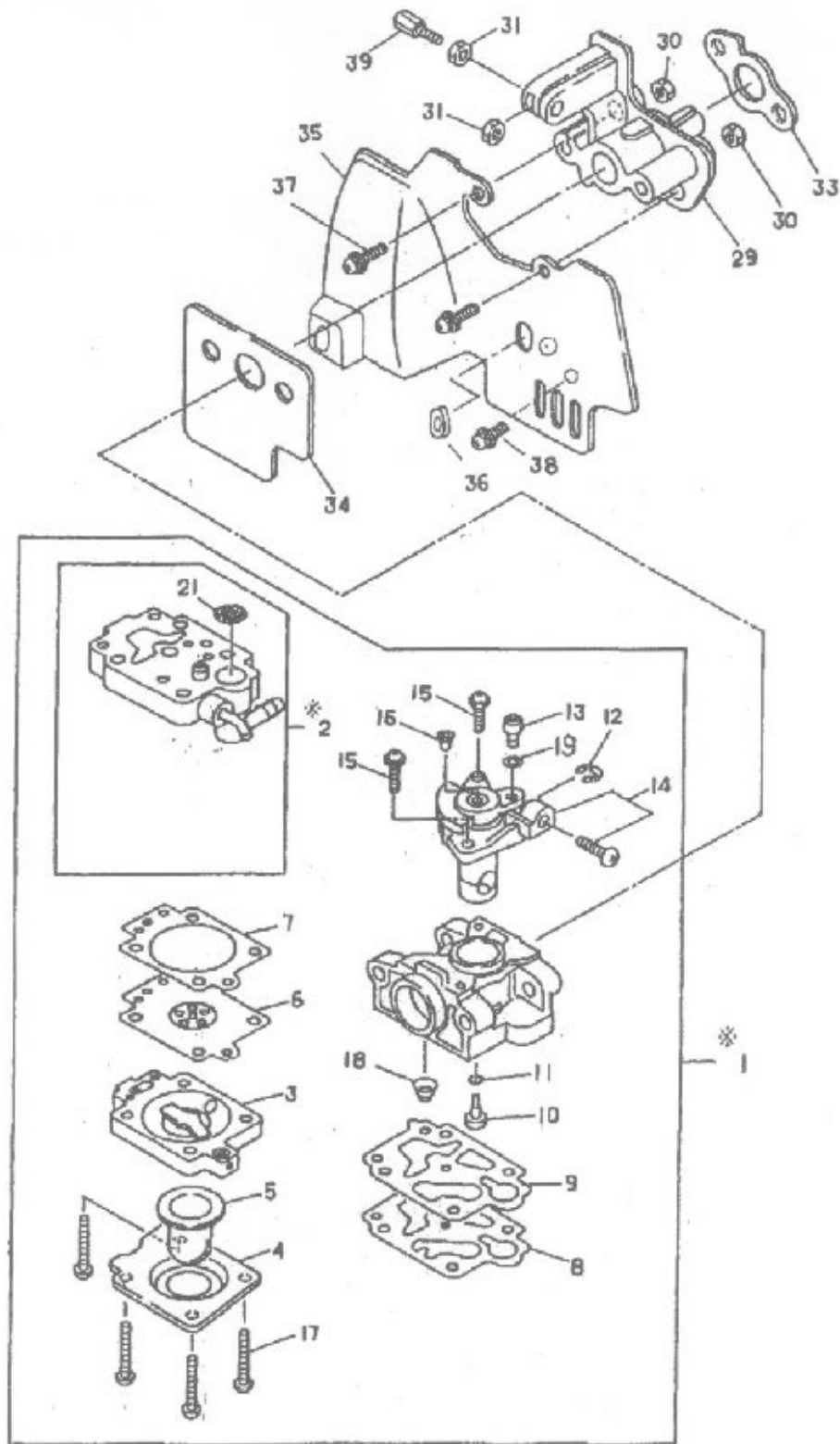


Figure 12: Carburetor

Item	Robin No.	Wyco No.	Description	Qty
1	5936002000	—	Carburetor	1
2	5926002060	—	Pump body assembly	1
3	5236046140	—	Air pump body assembly	1
4	5236046050	—	Primer pump cover	1
5	5246001150	—	Primer pump	1
6	5926008010	—	Metering diaphragm assembly	1
7	5236046040	—	Metering diaphragm gasket	1
8	5246001040	—	Pump diaphragm	1
9	5926002040	—	Pump gasket	1
10	5936002010	—	Jet	1
11	5246001010	—	O-Ring	1
12	5316005120	—	Spring retaining ring	1
13	5236018040	—	Swivel	1
14	5936002020	—	Throttle valve assembly	1
15	5206008030	—	Throttle collar screw	2
16	5206008110	—	Plug	1
17	5236046010	—	Pump cover screw	4
18	5926002020	—	Pump spring	1
19	5426005030	—	Washer	1
21	5016004010	—	Inlet screen	1
29	5923005001	403210	Insulator complete	1
30	0170059980	—	Nut	2
31	0022706000	—	Nut	2
33	5923501801	403211	Insulator gasket	1
34	5923501900	403212	Carburetor gasket	1
35	5933500600	—	Carburetor insulator	1
36	5257500300	—	Grommet	1
37	0043605180	—	Screw assembly	2
38	0043605100	—	Screw assembly	1
39	0149069972	—	Adjustment screw	1

Ignition

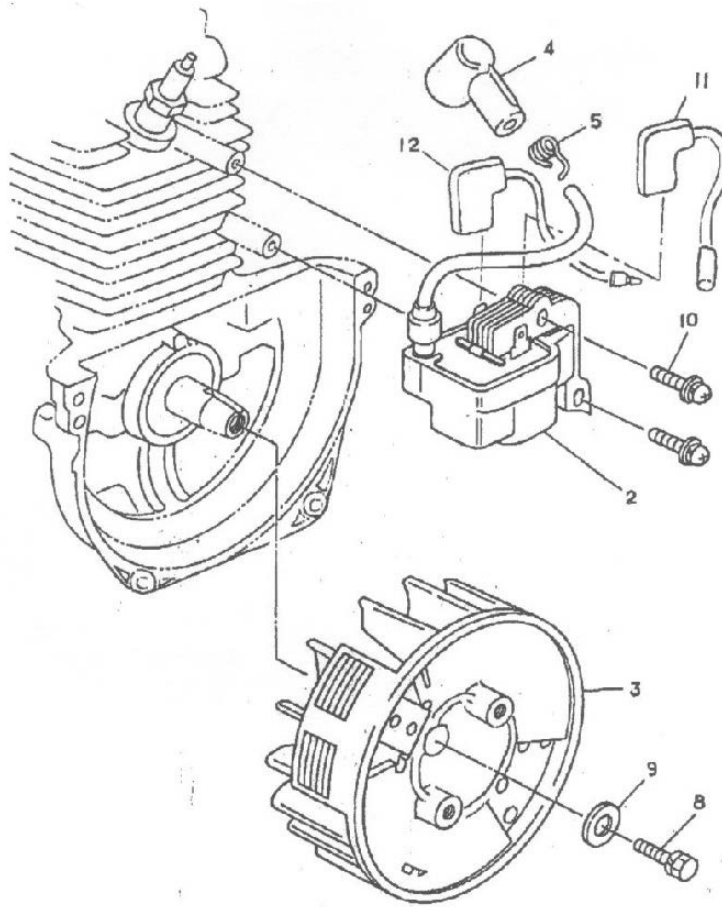


Figure 13: Ignition

Item	Robin No.	Description	Qty
2	5937001010	Ignition coil	1
3	5937001020	Flywheel CP	1
4	5927500100	Plug cap	1
5	0654009931	Plug cap spring	1
8	0011306160	Bolt assembly	1
9	0031206000	Washer	1
10	0140049920	Screw	2
11	5257018001-2	Wire complete	1
12	5927003000	Wire complete	1

Cover

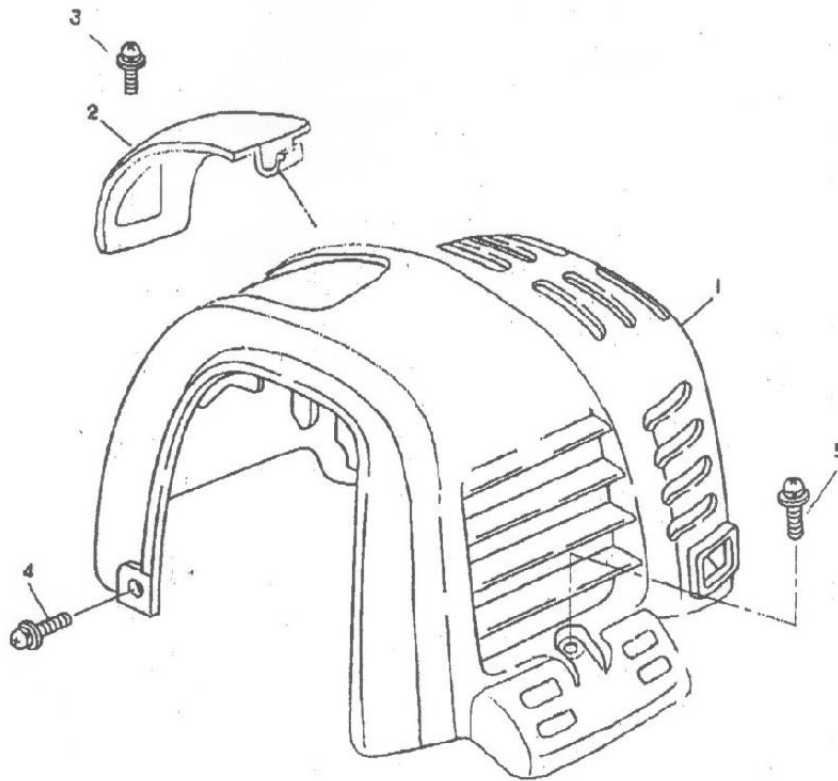


Figure 14: Cover

Item	Robin No.	Wyco No.	Description	Qty
1	5935500700	—	Cylinder cover	1
2	5935500500	403229	Plug cover	1
3	0140059920	—	Screw	1
4	004360510020	—	Screw assembly	2
5	0140059480	—	Screw assembly	1

Fuel Tank

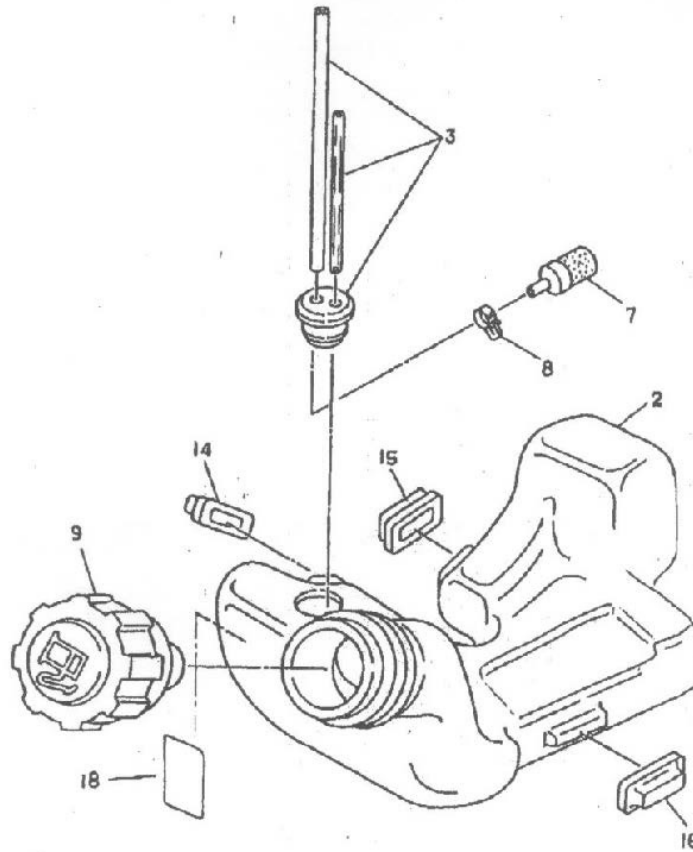


Figure 15: Fuel tank

Item	Robin No.	Wyco No.	Description	Qty
2	5936500200	—	Fuel tank	1
3	5936003000	—	Tube	1
7	5236503900	—	Filter	1
8	0561059990	—	Hose clamp	1
9	5926012000	—	Fuel tank assembly cap	1
14	5036500200-1	403223	Plate	1
15	5036500300-1	403224	Plate	1
16	5196500301	403225	Damper	1
18	0736389961	—	Caution label	1

Clutch Housing Assembly

NOTE: Wyco sells the complete Clutch Housing Assembly as Part #403239 (Robin Part #5938003000).

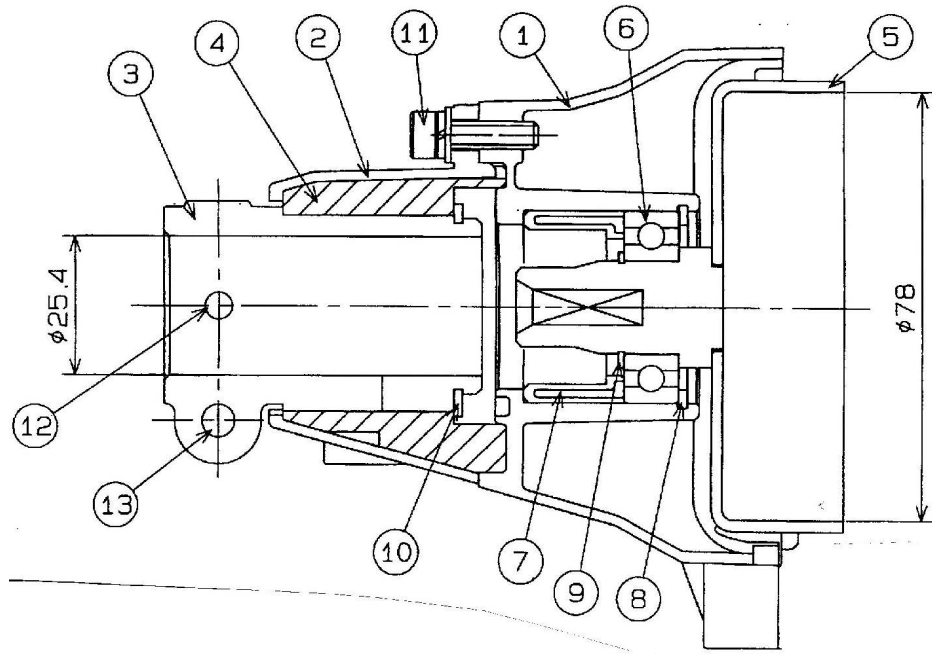


Figure 16: Clutch housing assembly

Item	Robin No.	Wyco No.	Description	Qty
1	6341500200-1	—	Clutch case 1, clutch parts	1
2	6341500300	—	Clutch case 2, clutch parts	1
3	6341501200	—	Pipe bracket, clutch parts	1
4	6341500500	—	Pipe damper, clutch parts	1
5	6342003000	—	Clutch drum, clutch parts	1
6	0600179810	—	Ball bearing, type 6003	1
7	6341500600	—	Spacer, clutch parts	1
8	0031435000	—	Inner snap ring, 5000-131	1
9	0031517000	—	Outer snap ring, 5100-66	1
10	0031532000	—	Outer snap ring, 5100-125	1
11	0119059950	—	Soc head cap screw, M5 × 18	3
12	0119059780	—	Soc head cap screw, M5 × 12	1
13	0119069750	—	Soc head cap screw, M6 × 22	5